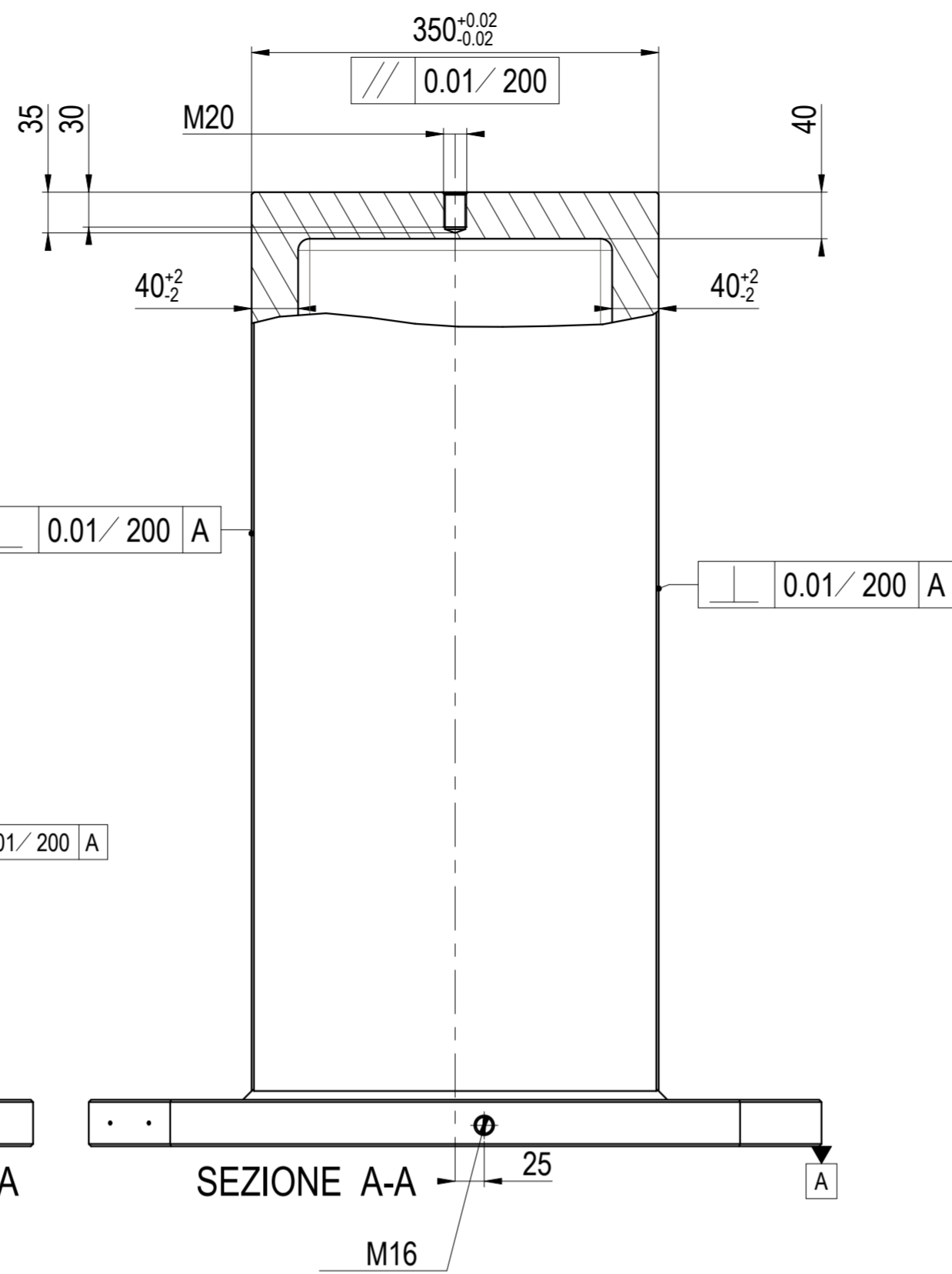
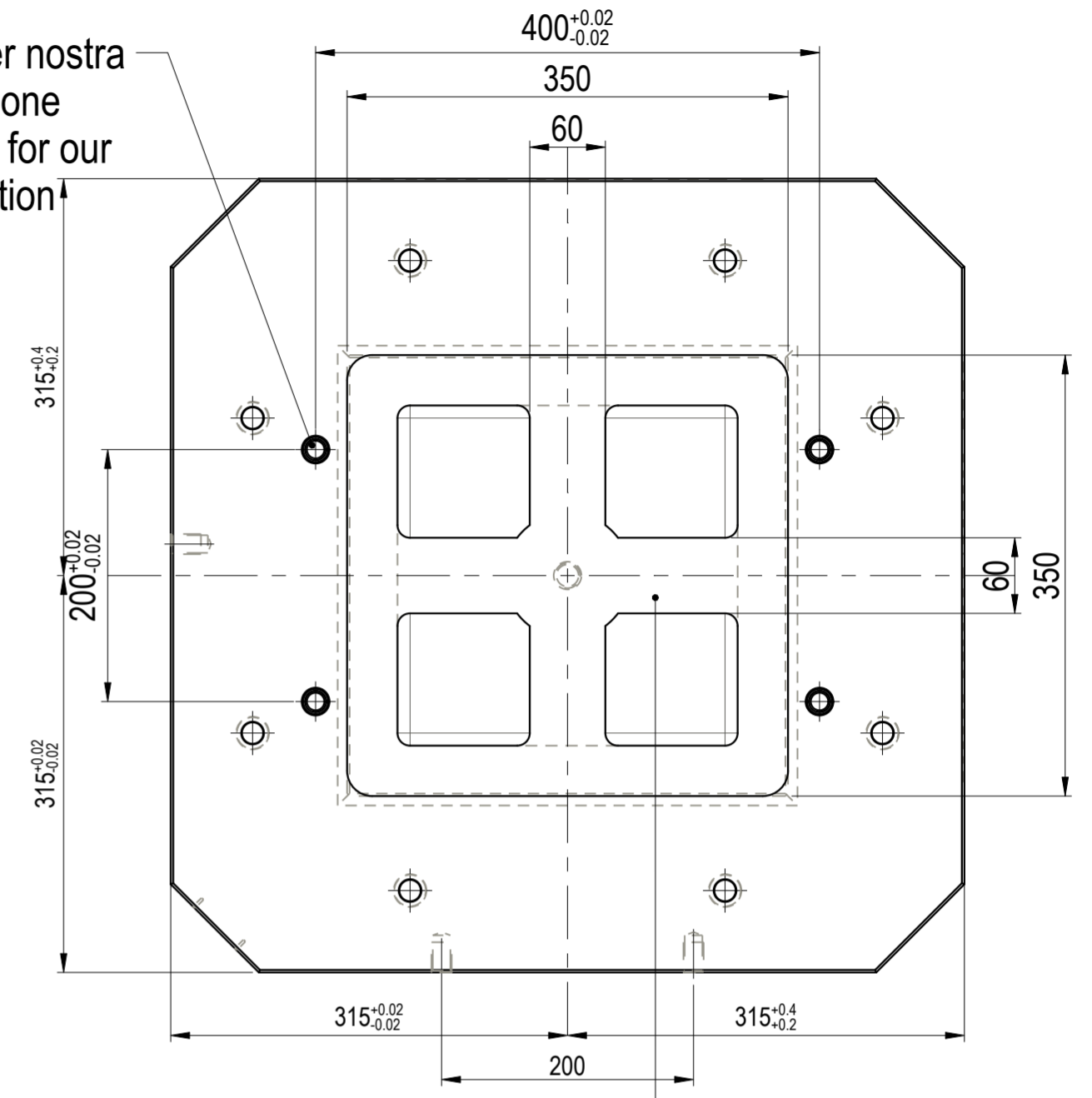


SEZIONE D-D
SCALA 1:5

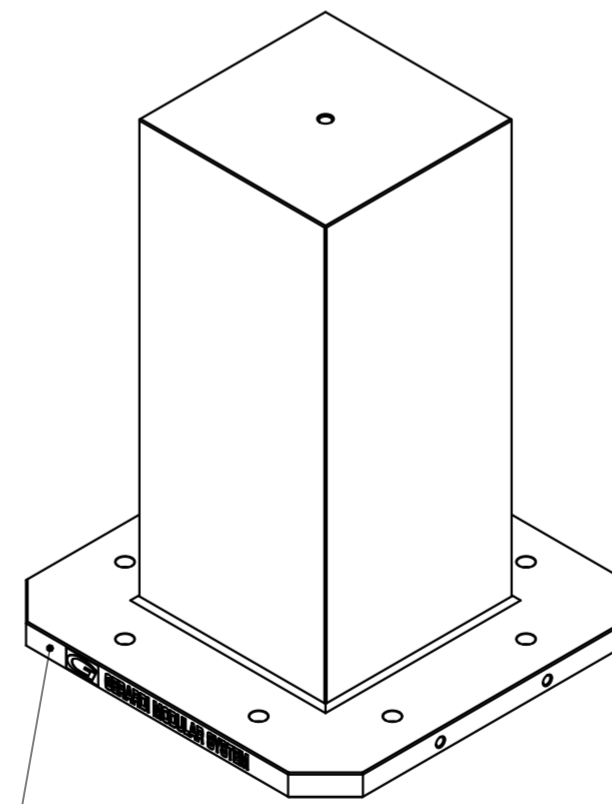
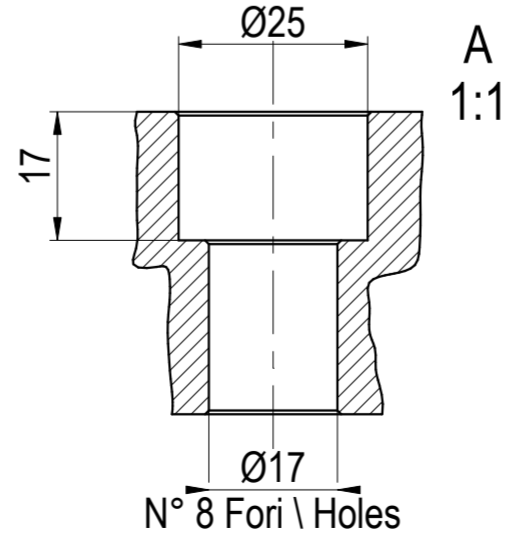
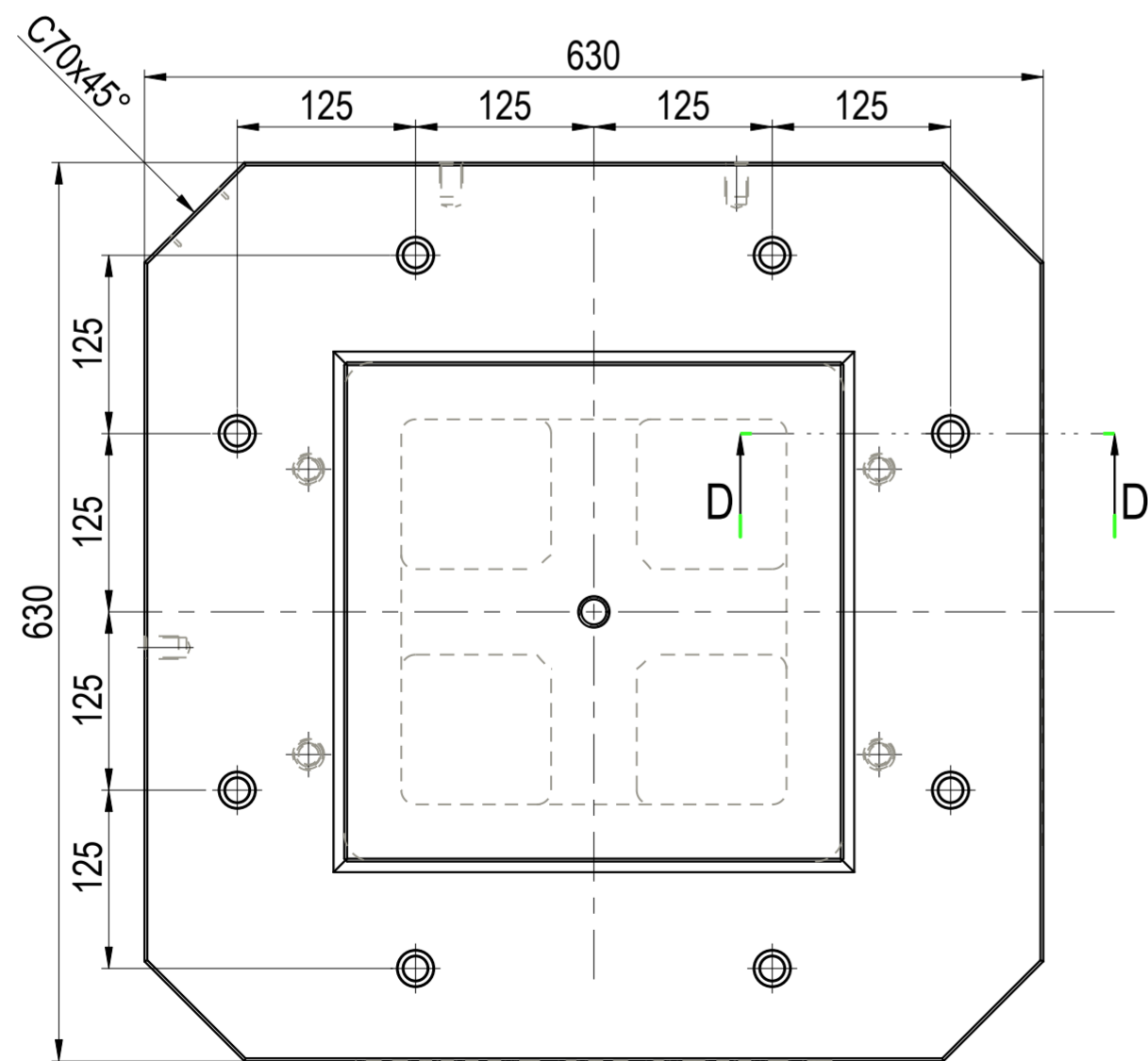


SEZIONE A-A

N° 4 Fori per nostra
produzione
N° 4 Holes for our
production



Scaricare la base
prof. 1mm
Discharge the
base 1mm deep



Applicare loghi e numero
seriale come da Disegno n°
"SN_PM"
Apply serial number and logos
as reported in Drawing n°
"SN_PM"

ATTENZIONE:

- quote indicative da verificare in caso di offerta;
- possibile presenza di lavorazioni aggiuntive e/o forature extra;
- verificare la compatibilità della base col proprio pallet;
- possibilità di richiedere un preventivo per eventuali modifiche o personalizzazioni.

ATTENTION:

- indicative dimensions to be verified in the event of an offer;
- possible presence of additional machining and/or extra drilling;
- check the compatibility of the base with your pallet;
- possibility to request a quote for any change or customization.

Rev.	Description	Drawn by	Date	Approved by
A		A.Vigliotta		



GERARDI S.p.A.
Lionale Pozzolo (VA)
Italy
Tel. +39 0331303911
Fax +39 0331301534

Denominazione Denomination		Progettazione - UTILIZZO ESCLUSIVO UFFICIO TECNICO		
Cubo completamente lavorato ART. 53C \ 180 Completely machined cube ART. 53C\180		Template	APOR	
Articolo Article		53C	Toll. non quotate Tol. not quoted	N° ordine Order N°
Materiale Material		180	Spigoli arr. Chamfers	Disegnato da Drawn by
Tratt. termico Heat treatment		Peso Weight	Kg 404.55	Foglio Sheet
Durezza Hardness		Revisione Revision	A.3	Codice commerciale Sales item code
Tratt. superficiale Surface treatment		Data Date	30/07/24	Disegno N° Drawing N°
				853D00180
				W0000522307