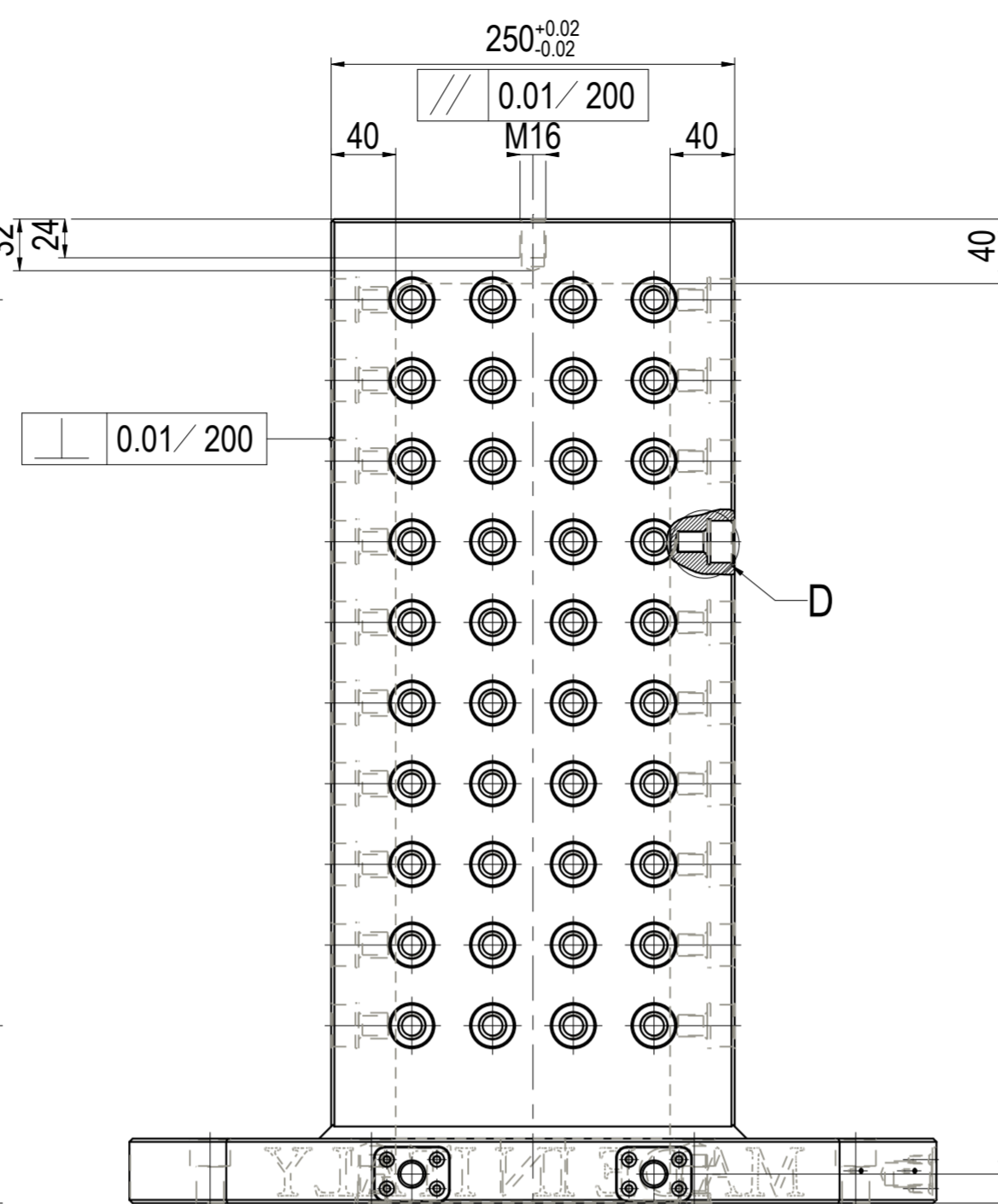
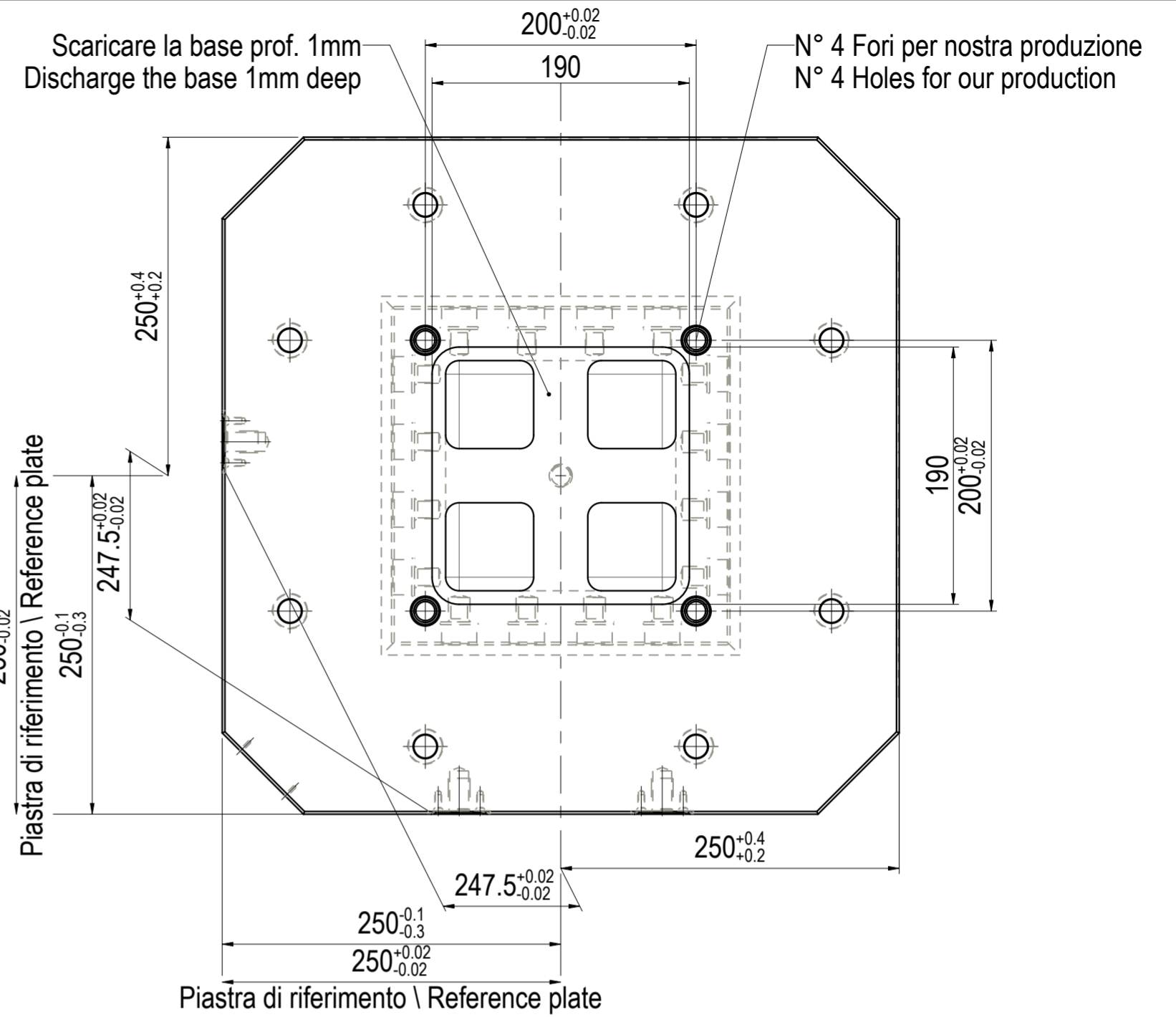


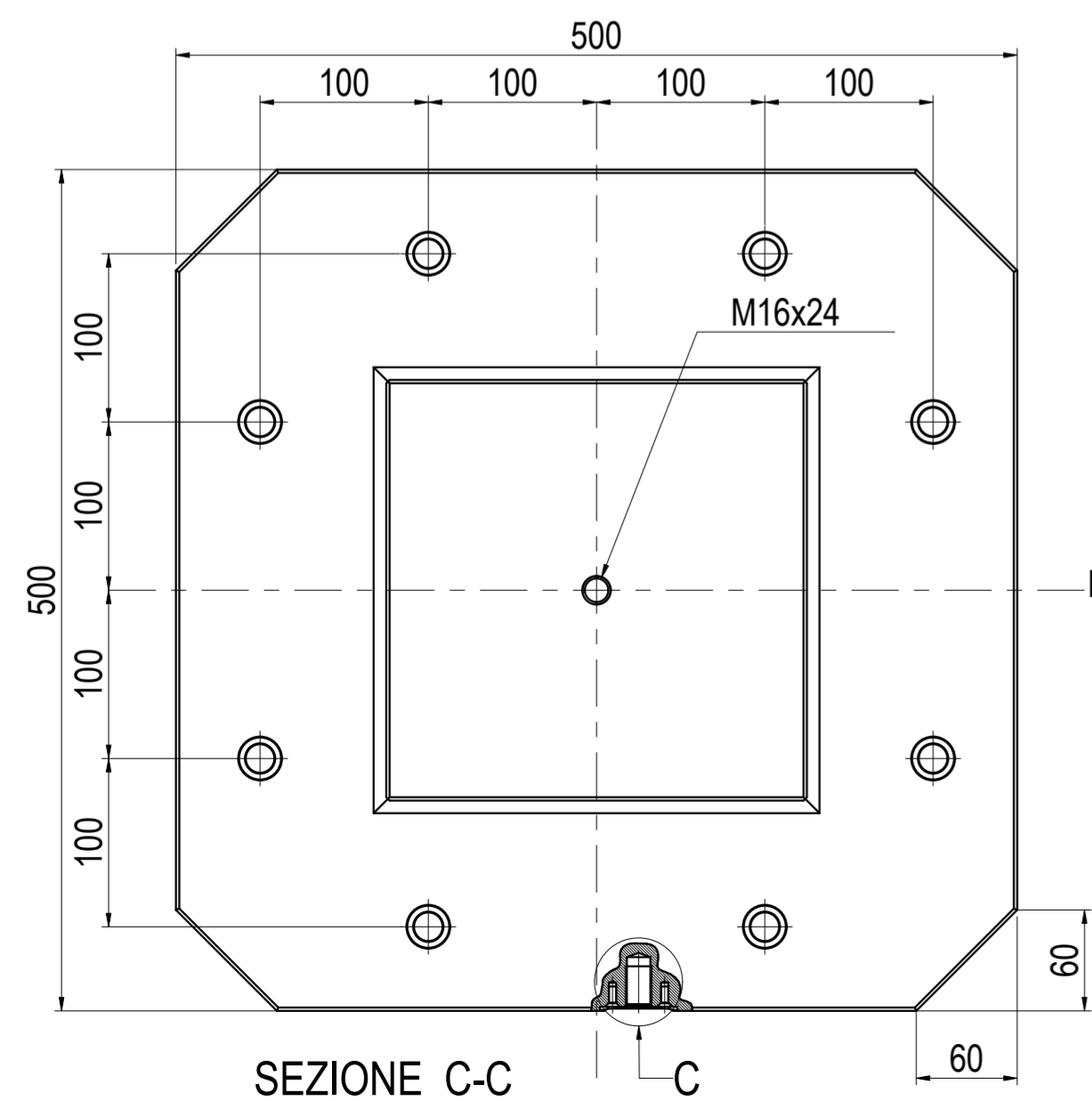
SEZIONE B-B  
SCALA 1:4



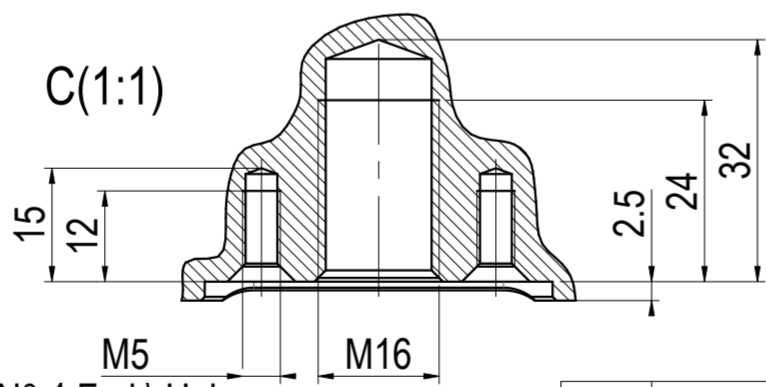
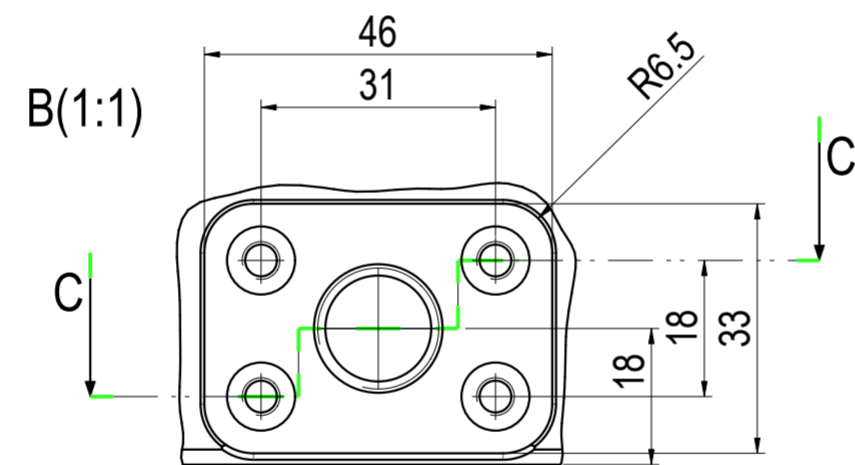
SEZIONE A-A



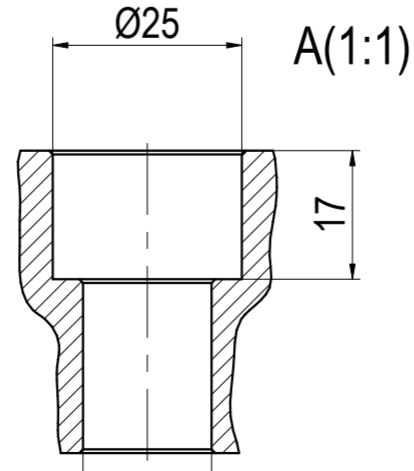
Piastra di riferimento \ Reference plate



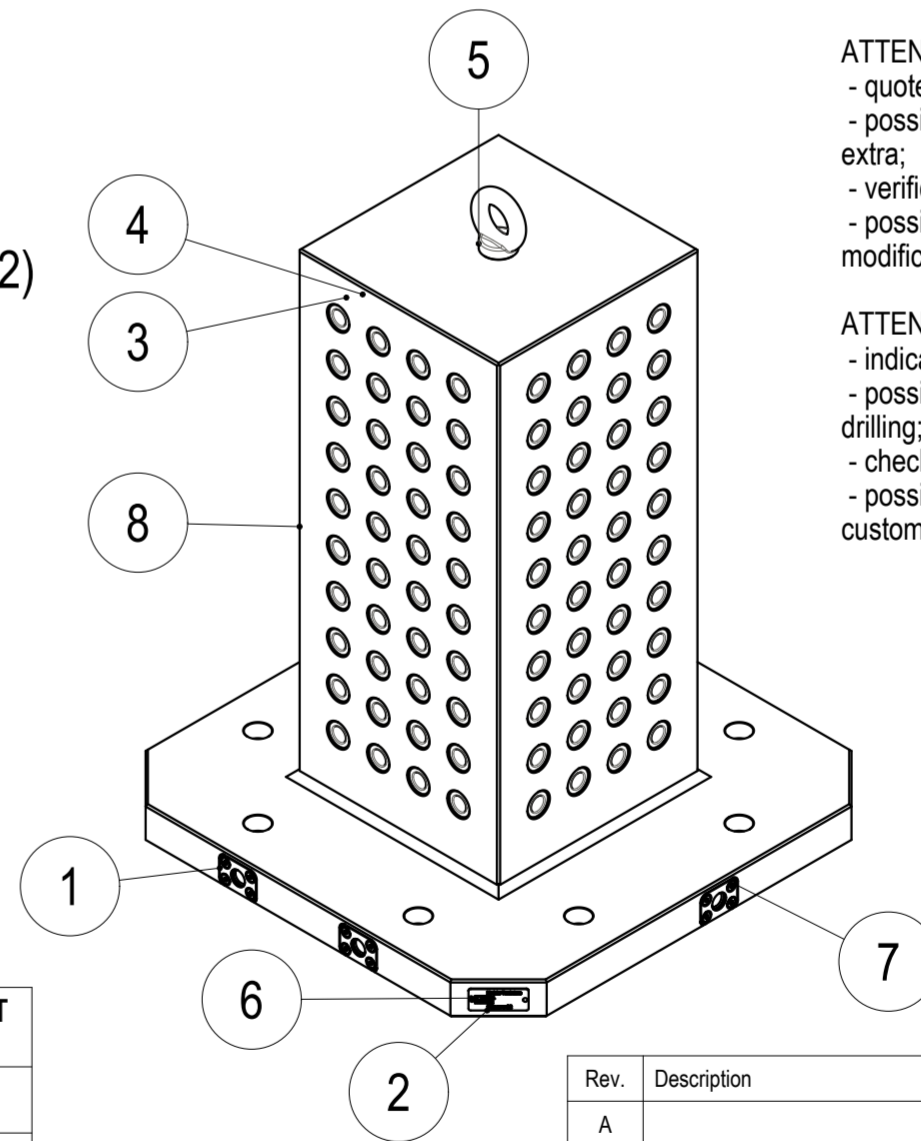
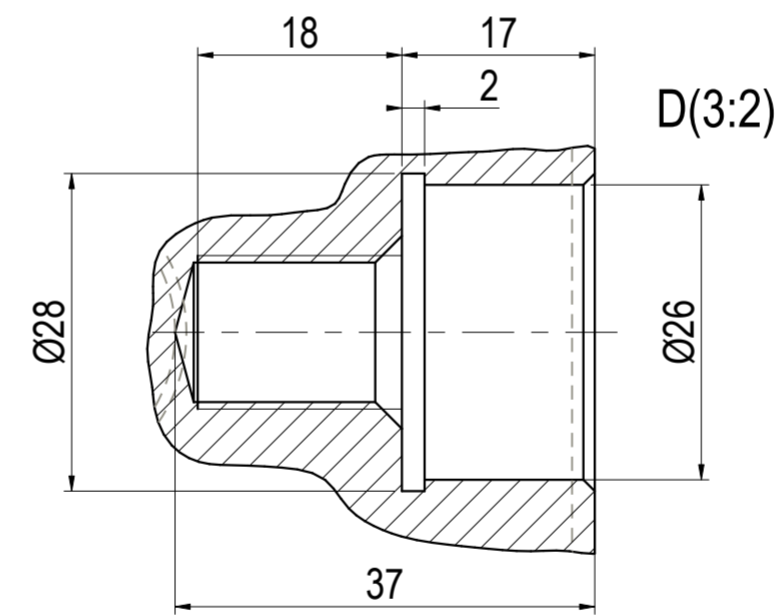
SEZIONE C-C



N° 4 Fori \ Holes



N° 8 Fori \ Holes



ATTENZIONE:  
- quote indicative da verificare in caso di offerta;  
- possibile presenza di lavorazioni aggiuntive e/o forature extra;  
- verificare la compatibilità della base col proprio pallet;  
- possibilità di richiedere un preventivo per eventuali modifiche o personalizzazioni.

ATTENTION:  
- indicative dimensions to be verified in the event of an offer;  
- possible presence of additional machining and/or extra drilling;  
- check the compatibility of the base with your pallet;  
- possibility to request a quote for any change or customization.

PO S.	CODICE - CODE	DESCRIZIONE - DESCRIPTION	Q.T Y
1	4SH45322	Piastrina riferimento laterale Lateral reference plate	3
2	4SH53231	Piastra identificativa Portapezzi Tombstone Serial Number plate	1
3	883D000016	Bussola di centraggio DIN 179C - Ø26n6 / Ø16F7 x 16 Centering bushing DIN 179C - Ø26n6 / Ø16F7 x 16	160
4	883E000012	Helicoili inox M12x18 Inox Helicoili M12x18	160
5	GOLFARE_M16	Golfare M16 Eyebolt M16	1
6	RIVETTO_2-3X5	Rivetto Ø2.3 x 5 Rivet Ø2.3 x 5	2
7	VTPSEL_M5X12	Vite testa piana svasata esagono incassato Countersunk socket head screw	12
8	W0000522362	Corpo cubo completamente lavorato con bussole temperate e filetti riportati Completely machined cube body with hardened bushings and steel helicoils	1



GERARDI S.p.A.  
Lonzate Pozzolo (VA)  
Italy  
Tel. +39 0331303911  
Fax +39 0331301534

Rev.	Description	Drawn by	Date	Approved by
A		A.Vigliotta		

Articolo	53F	Toll. non quotate	0.100	Fabbisogno Q.ty needed	-
Material	G30	Spigoli arr. Chamfers	0.500	Disegnato da Drawn by	A. Vigliotta
Tratt. termico	Ricottura di distensione / Stress relieving	Peso Weight	1 of 1	Approvato da Approved by	
Durezza	-	Revisione Revision	A.1	Codice commerciale Sales item code	853F00090
Tratt. superficiale	Verniciatura a polvere / Powder coating	Data Date	26/01/22	Disegno N° Drawing N°	W0000522349